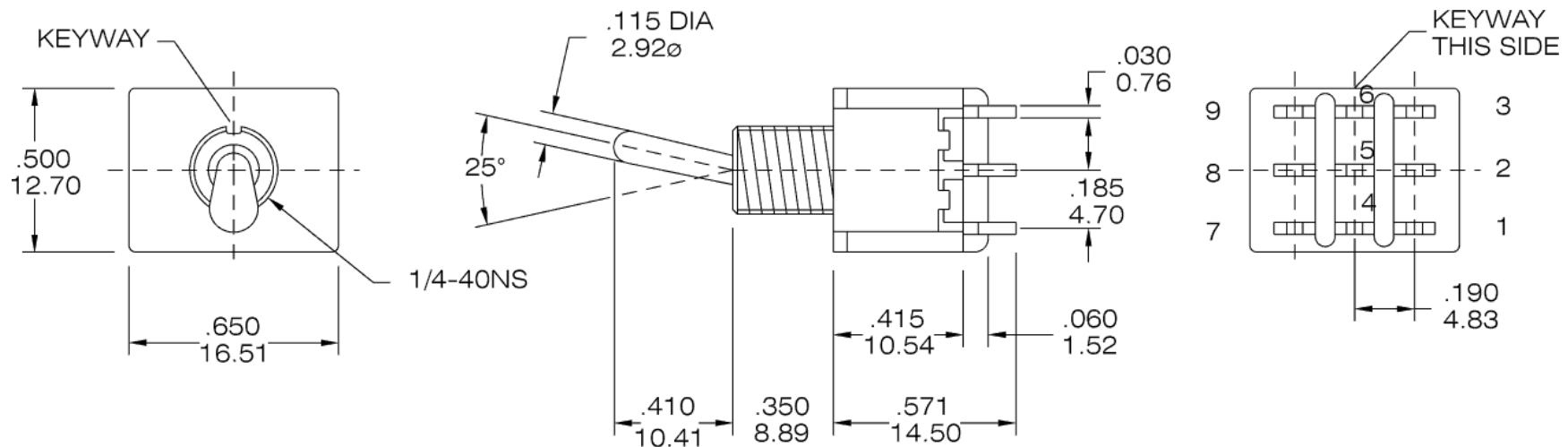




800-227-0075

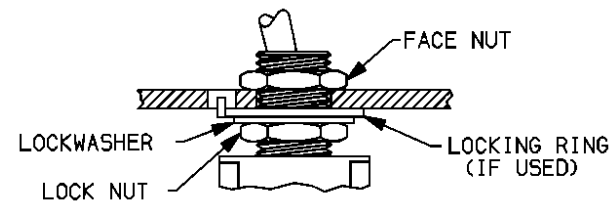
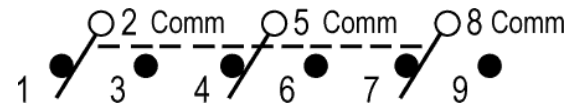
<http://www.vimex.com>

# Product Drawing



Use diagram shown above

PCB Footprint



Typical Assembly with Locking Ring  
Locknut should always be used with non-flanged bushing  
To prevent damaging panel front, always tighten locknut at the back of the panel.

Page: 1				Description:	Standard outline drawing.
of: 1				P/N	T8301
Date:	2003-12-02	Revision:	1.0		